

Rosefield Solar Farm

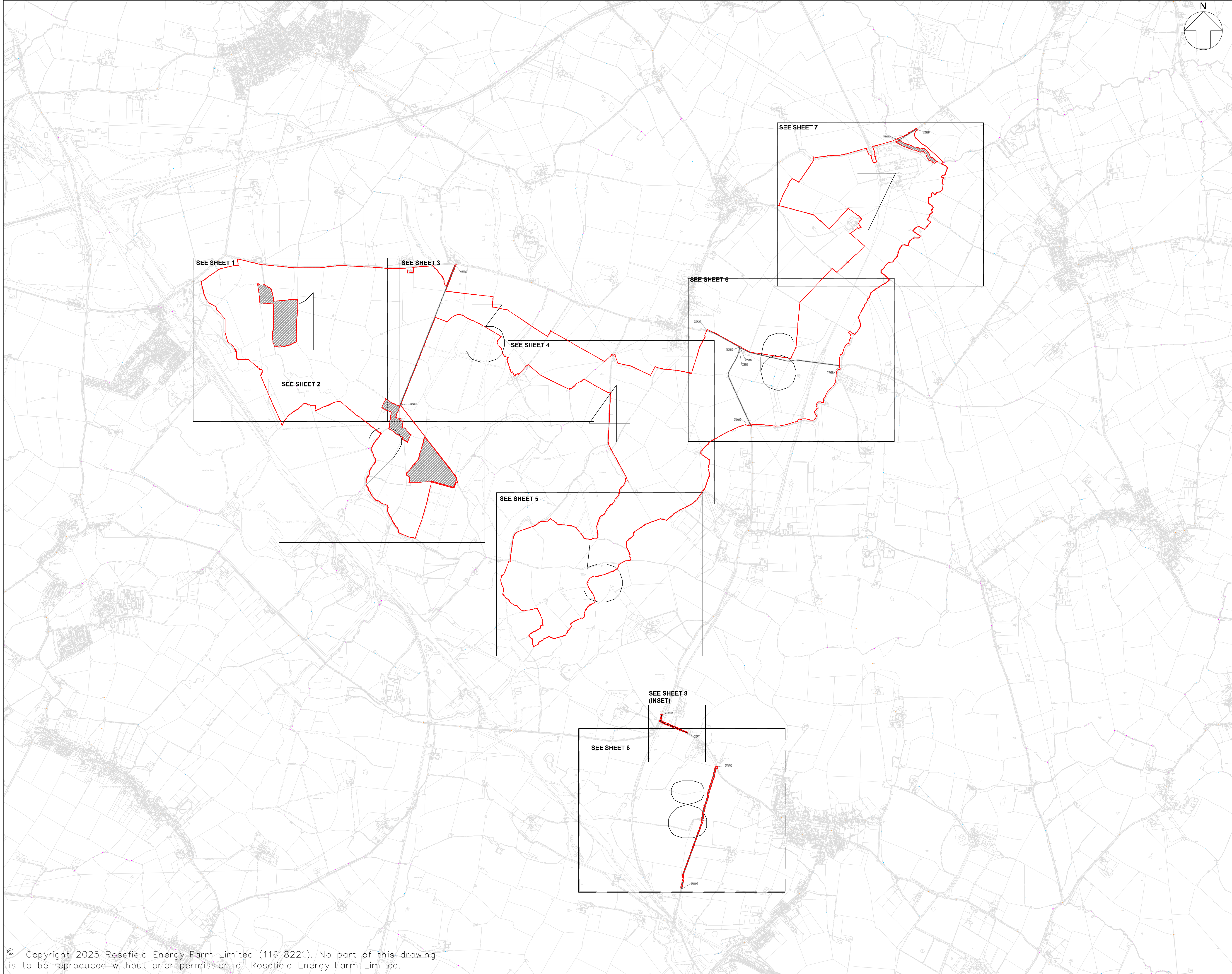
Traffic Regulations Plans

APFP Regulation 5(2)(o)
Planning Act 2008
Infrastructure Planning
(Applications: Prescribed Forms
and Procedure) Regulations 2009
EN010158/APP/2.5.2
October 2025
Rosefield Energyfarm Limited



Traffic Regulations Plans

Drawing number	Revision number	Drawing title	Scale	Reason for Revision
00	02	Key Plan	1:15000 @ A1	Updated the north point to include a letter N.
01	02	Sheet 1 of 8	1:2500 @ A1	Updated the north point to include a letter N.
02	02	Sheet 2 of 8	1:2500 @ A1	Updated the north point to include a letter N.
03	02	Sheet 3 of 8	1:2500 @ A1	Updated the north point to include a letter N.
04	02	Sheet 4 of 8	1:2500 @ A1	Updated the north point to include a letter N.
05	02	Sheet 5 of 8	1:2500 @ A1	Updated the north point to include a letter N.
06	02	Sheet 6 of 8	1:2500 @ A1	Updated the north point to include a letter N.
07	02	Sheet 7 of 8	1:2500 @ A1	Updated the north point to include a letter N.
08	02	Sheet 8 of 8	1:2500 @ A1	Updated the north point to include a letter N. Inset plan location clarification made.



LEGEND:

- STREETWORKS AND TEMPORARY SPEED LIMIT CHANGE
- ORDER LIMITS
- AREA OUTSIDE ORDER LIMITS
- STREETWORKS LOCATION REFERENCE

NOTES:

- ALL DIMENSIONS ARE IN METRES UNLESS STATED OTHERWISE.
- THE STREETS, RIGHTS OF WAY AND ACCESS PLANS SHOULD BE READ IN CONJUNCTION WITH THE DEVELOPMENT CONSENT ORDER (DCO) AND THE DOCUMENTS TO BE CERTIFIED UNDER IT, IN PARTICULAR PARTS 3AND 4 OF THE DCO AND SCHEDULES 4-8.
- FOR INFORMATION RELATING TO THE PROPOSED TEMPORARY TRAFFIC MANAGEMENT AND TRAFFIC REGULATION ORDERS, PLEASE SEE TRAFFIC REGULATIONS PLAN.
- THE ORDER LIMITS HAVE BEEN DRAWN TO THE LAND REGISTRY BOUNDARIES AND TOPOGRAPHICAL SURVEY DATA OF THE SITE. THE ACCURACY OF LAND REGISTRY AND THE TOPOGRAPHICAL SURVEY DIFFERS FROM THE OS BASE MAPPING, WHICH RESULTS IN THE ORDER LIMITS NOT ALIGNING WITH THE LINE WORK SHOWN ON THE OS MAPPING.

02	OCT 2025	UPDATES FOLLOWING S51 ADVICE	PF	PF	EDF
01	SEP 2025	ISSUE	PF	PF	EDF
REVISION	ON L	DESCRIPTION	BY	CHECKED	APPROVED

Rosefield Solar Farm

Rosefield
Solar Farm

DOCUMENT:
APPLICATION DRAWINGS
FOR APPROVAL

REGULATION 5(2)(o)

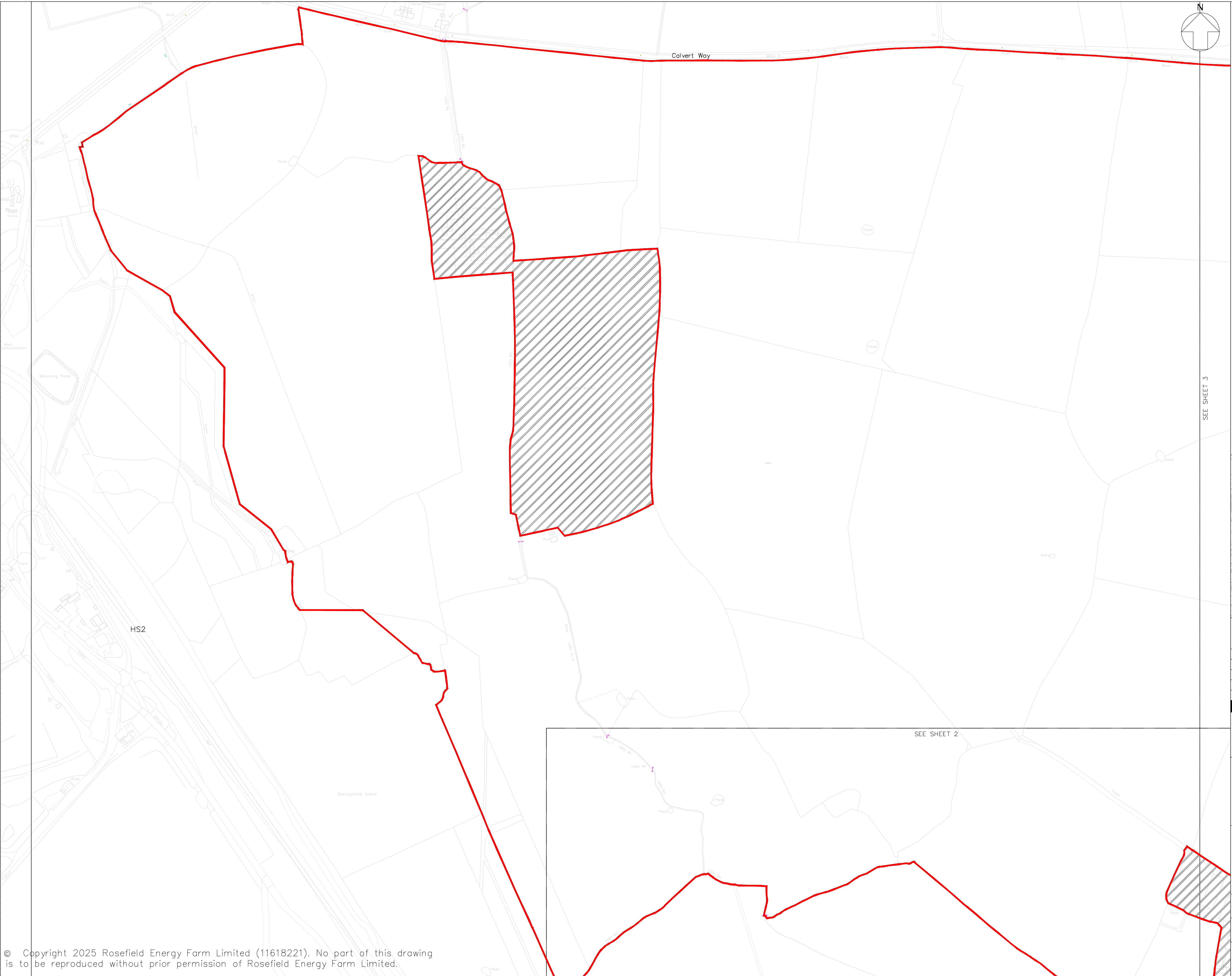
DRAWING TITLE:
TRAFFIC REGULATIONS PLAN

KEY PLAN

PIN REFERENCE NUMBER: EN010158/APP/2.5.2	REVISION: 02	
DATE: OCTOBER 2025	DRAWN: PF	SCALE: 1:15,000 at A1

SCALE BAR:

0 1km



LEGEND:

- STREETWORKS AND TEMPORARY SPEED LIMIT CHANGE
- ORDER LIMITS
- AREA OUTSIDE ORDER LIMITS
- STREETWORKS LOCATION REFERENCE

NOTES:

- ALL DIMENSIONS ARE IN METRES UNLESS STATED OTHERWISE.
- THE STREETS, RIGHTS OF WAY AND ACCESS PLANS SHOULD BE READ IN CONJUNCTION WITH THE DEVELOPMENT CONSENT ORDER (DCO) AND THE DOCUMENTS TO BE CERTIFIED UNDER IT, IN PARTICULAR PARTS 3 AND 4 OF THE DCO AND SCHEDULES 4-8.
- FOR INFORMATION RELATING TO THE PROPOSED TEMPORARY TRAFFIC MANAGEMENT AND TRAFFIC REGULATION ORDERS, PLEASE SEE TRAFFIC REGULATIONS PLAN.
- THE ORDER LIMITS HAVE BEEN DRAWN TO THE LAND REGISTRY BOUNDARIES AND TOPOGRAPHICAL SURVEY DATA OF THE SITE. THE ACCURACY OF LAND REGISTRY AND THE TOPOGRAPHICAL SURVEY DIFFERS FROM THE OS BASE MAPPING, WHICH RESULTS IN THE ORDER LIMITS NOT ALIGNING WITH THE LINE WORK SHOWN ON THE OS MAPPING.

KEY PLAN:

02	OCT 2025	UPDATES FOLLOWING S51 ADVICE	PF	PF	EDF
01	SEP 2025	ISSUE	PF	PF	EDF
REVISION	DATE	DESCRIPTION	BY	CHECKED	APPROVED

Rosefield Solar Farm

DOCUMENT:
APPLICATION DRAWINGS
FOR APPROVAL

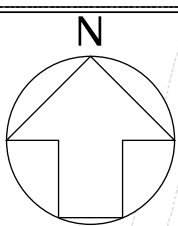
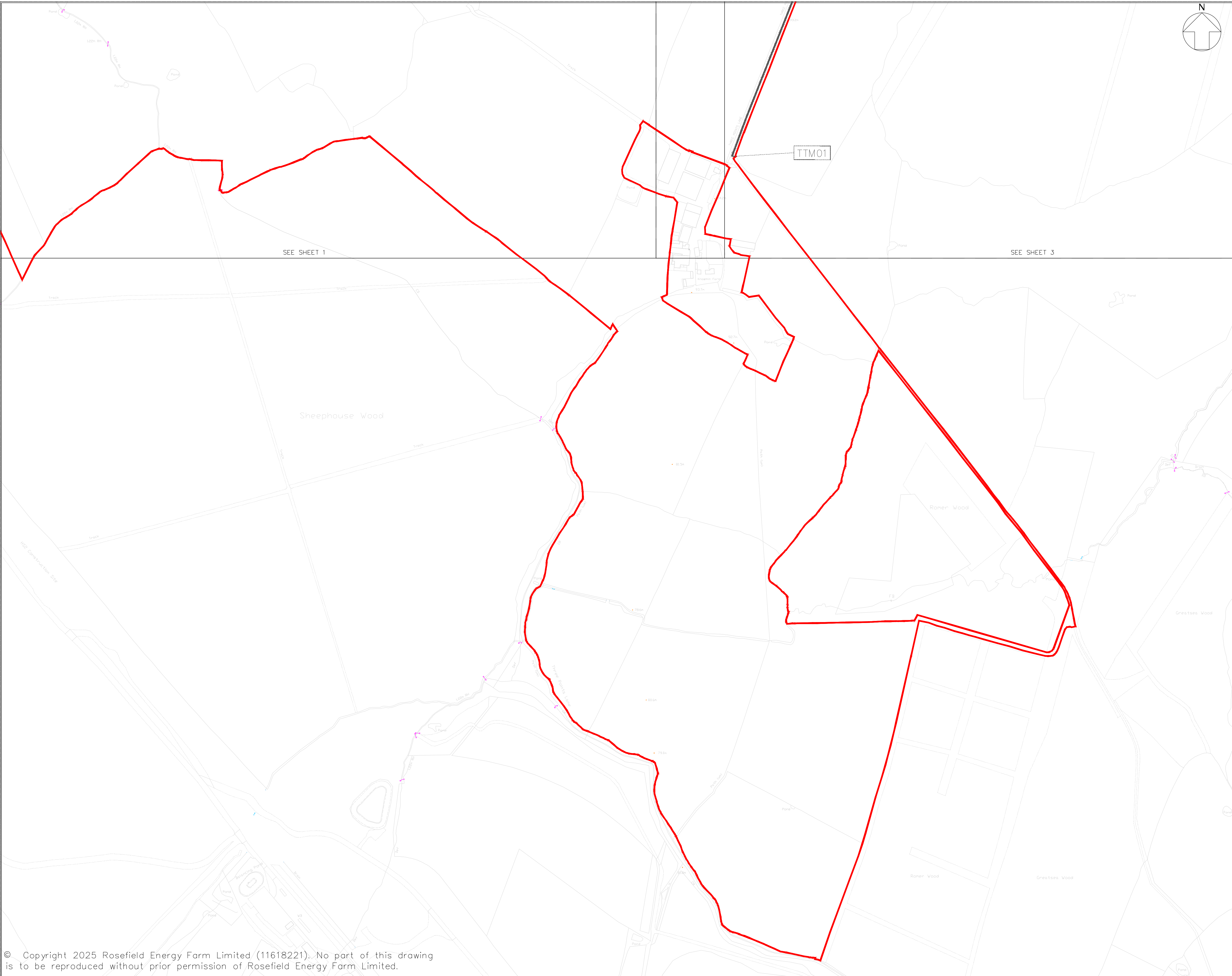
REGULATION 5(2)(o)

DRAWING TITLE:
TRAFFIC REGULATIONS PLAN

SHEET 1 OF 8

PIN REFERENCE NUMBER: EN010158/APP/2.5.2		REVISION: 02
DATE: OCTOBER 2025	DRAWN: PF	SCALE: 1:2,500 at A1

SCALE BAR:



LEGEND:

- STREETWORKS AND TEMPORARY SPEED LIMIT CHANGE
- ORDER LIMITS
- AREA OUTSIDE ORDER LIMITS
- STREETWORKS LOCATION REFERENCE

NOTES:

- ALL DIMENSIONS ARE IN METRES UNLESS STATED OTHERWISE.
- THE STREETS, RIGHTS OF WAY AND ACCESS PLANS SHOULD BE READ IN CONJUNCTION WITH THE DEVELOPMENT CONSENT ORDER (DCO) AND THE DOCUMENTS TO BE CERTIFIED UNDER IT, IN PARTICULAR PARTS 3AND 4 OF THE DCO AND SCHEDULES 4-8.
- FOR INFORMATION RELATING TO THE PROPOSED TEMPORARY TRAFFIC MANAGEMENT AND TRAFFIC REGULATION ORDERS, PLEASE SEE TRAFFIC REGULATIONS PLAN.
- THE ORDER LIMITS HAVE BEEN DRAWN TO THE LAND REGISTRY BOUNDARIES AND TOPOGRAPHICAL SURVEY DATA OF THE SITE. THE ACCURACY OF LAND REGISTRY AND THE TOPOGRAPHICAL SURVEY DIFFERS FROM THE OS BASE MAPPING, WHICH RESULTS IN THE ORDER LIMITS NOT ALIGNING WITH THE LINE WORK SHOWN ON THE OS MAPPING.

KEY PLAN:

D2	OCT 2025	UPDATES FOLLOWING SS1 ADVICE	PF	PF	EDF
D1	SEP 2025	ISSUE	PF	PF	EDF
REVISION	DATE	DESCRIPTION	BY	CHECKED	APPROVED

Rosefield Solar Farm

DOCUMENT:
APPLICATION DRAWINGS
FOR APPROVAL

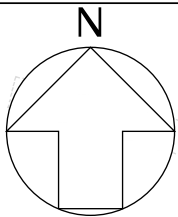
REGULATION 5(2)(o)

DRAWING TITLE:
TRAFFIC REGULATIONS PLAN

SHEET 2 OF 8

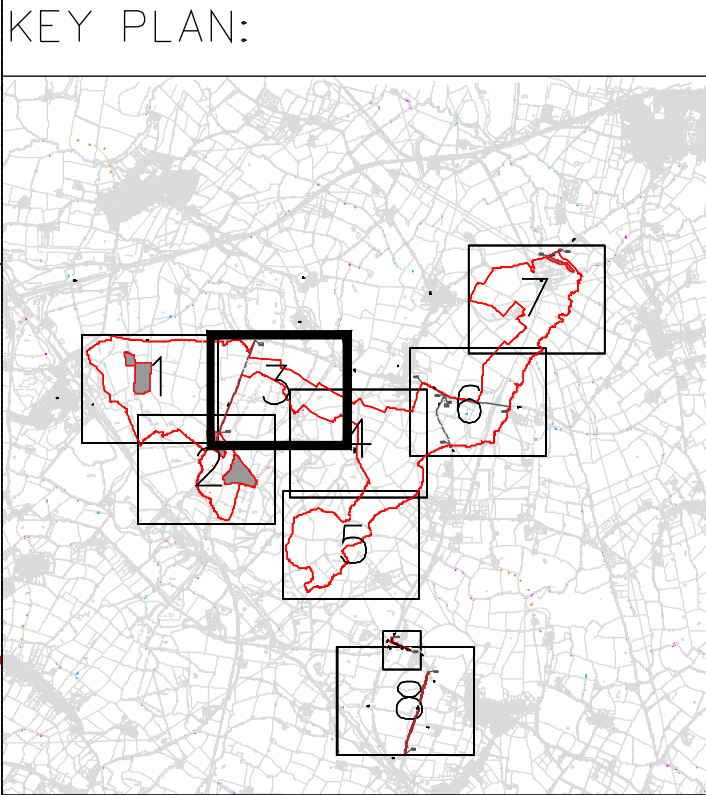
PIN REFERENCE NUMBER: EN010158/APP/2.5.2	REVISION: 02	
DATE: OCTOBER 2025	DRAWN: PF	SCALE: 1:2,500 at A1

SCALE BAR:



- LEGEND:
- STREETWORKS AND TEMPORARY SPEED LIMIT CHANGE
 - ORDER LIMITS
 - AREA OUTSIDE ORDER LIMITS
 - STREETWORKS LOCATION REFERENCE

- NOTES:
1. ALL DIMENSIONS ARE IN METRES UNLESS STATED OTHERWISE.
 2. THE STREETS, RIGHTS OF WAY AND ACCESS PLANS SHOULD BE READ IN CONJUNCTION WITH THE DEVELOPMENT CONSENT ORDER (DCO) AND THE DOCUMENTS TO BE CERTIFIED UNDER IT, IN PARTICULAR PARTS 3 AND 4 OF THE DCO AND SCHEDULES 4-8.
 3. FOR INFORMATION RELATING TO THE PROPOSED TEMPORARY TRAFFIC MANAGEMENT AND TRAFFIC REGULATION ORDERS, PLEASE SEE TRAFFIC REGULATIONS PLAN.
 4. THE ORDER LIMITS HAVE BEEN DRAWN TO THE LAND REGISTRY BOUNDARIES AND TOPOGRAPHICAL SURVEY DATA OF THE SITE. THE ACCURACY OF LAND REGISTRY AND THE TOPOGRAPHICAL SURVEY DIFFERS FROM THE OS BASE MAPPING, WHICH RESULTS IN THE ORDER LIMITS NOT ALIGNING WITH THE LINE WORK SHOWN ON THE OS MAPPING.



D2	OCT 2025	UPDATES FOLLOWING S51 ADVICE	PF	PF	EDF
01	SEP 2025	ISSUE	PF	PF	EDF
REVISION	DATE	DESCRIPTION	DRAWN	CHECKED	APPROVED

Rosefield Solar Farm

DOCUMENT:
APPLICATION DRAWINGS
FOR APPROVAL

REGULATION 5(2)(o)

DRAWING TITLE:
TRAFFIC REGULATIONS PLAN

SHEET 3 OF 8

PIN REFERENCE NUMBER:
EN010158/APP/2.5.2

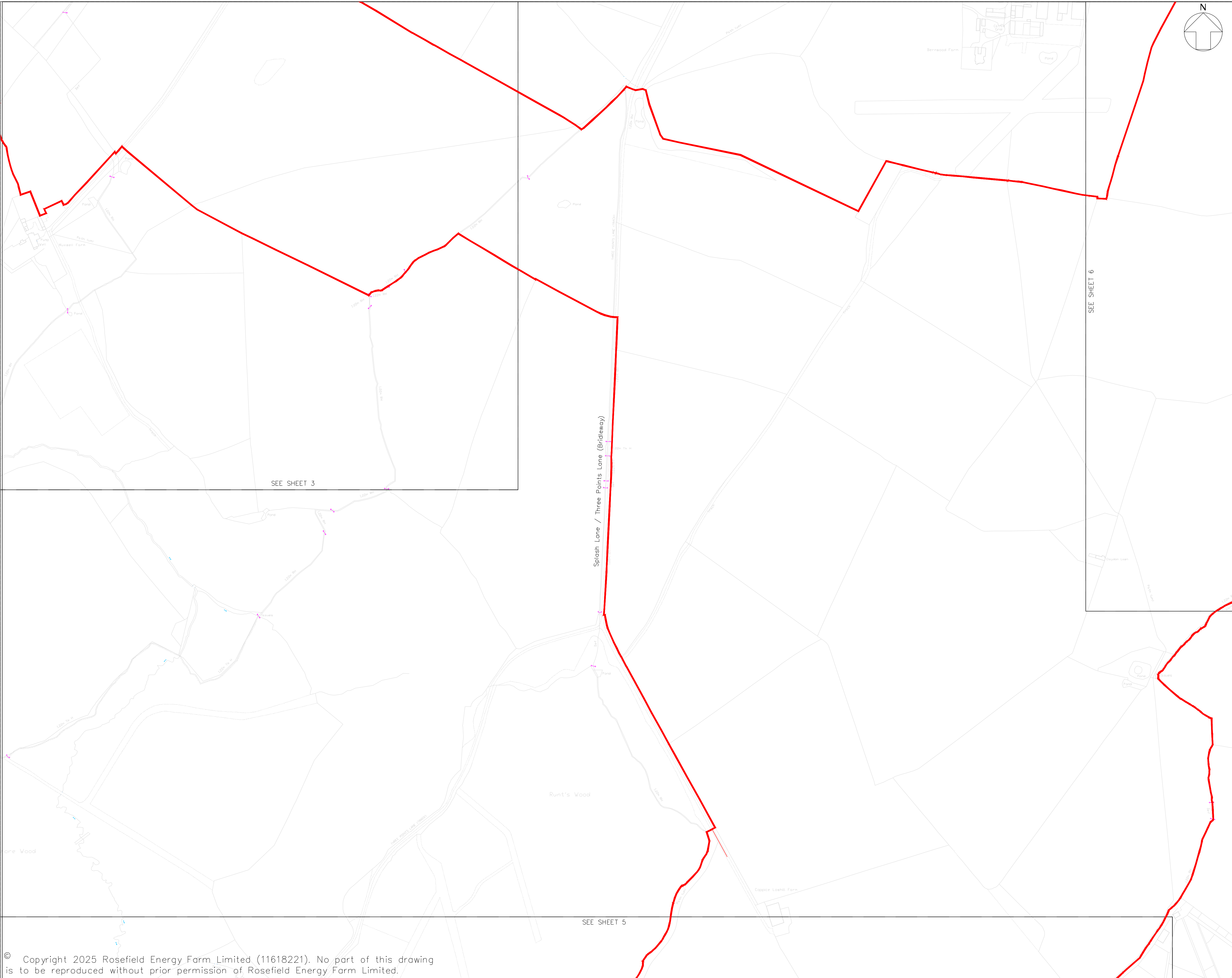
REVISION:
02

DATE:
OCTOBER 2025

DRAWN:
PF

SCALE:
1:2,500 at A1

SCALE BAR:



LEGEND:

- STREETWORKS AND TEMPORARY SPEED LIMIT CHANGE
- ORDER LIMITS
- AREA OUTSIDE ORDER LIMITS
- STREETWORKS LOCATION REFERENCE

NOTES:

- ALL DIMENSIONS ARE IN METRES UNLESS STATED OTHERWISE.
- THE STREETS, RIGHTS OF WAY AND ACCESS PLANS SHOULD BE READ IN CONJUNCTION WITH THE DEVELOPMENT CONSENT ORDER (DCO) AND THE DOCUMENTS TO BE CERTIFIED UNDER IT, IN PARTICULAR PARTS 3 AND 4 OF THE DCO AND SCHEDULES 4-8.
- FOR INFORMATION RELATING TO THE PROPOSED TEMPORARY TRAFFIC MANAGEMENT AND TRAFFIC REGULATION ORDERS, PLEASE SEE TRAFFIC REGULATIONS PLAN.
- THE ORDER LIMITS HAVE BEEN DRAWN TO THE LAND REGISTRY BOUNDARIES AND TOPOGRAPHICAL SURVEY DATA OF THE SITE. THE ACCURACY OF LAND REGISTRY AND THE TOPOGRAPHICAL SURVEY DIFFERS FROM THE OS BASE MAPPING, WHICH RESULTS IN THE ORDER LIMITS NOT ALIGNING WITH THE LINE WORK SHOWN ON THE OS MAPPING.

KEY PLAN:

02	OCT 2025	UPDATES FOLLOWING S51 ADVICE	PF	PF	EDF
01	SEP 2025	ISSUE	PF	PF	EDF
REVISION	BY	DATE	DESCRIPTION	BY	DATE

Rosefield Solar Farm

DOCUMENT:

APPLICATION DRAWINGS FOR APPROVAL

REGULATION 5(2)(o)

DRAWING TITLE:

TRAFFIC REGULATIONS PLAN

SHEET 4 OF 8

PIN REFERENCE NUMBER:

EN010158/APP/2.5.2

REVISION:

02

DATE:

OCTOBER 2025

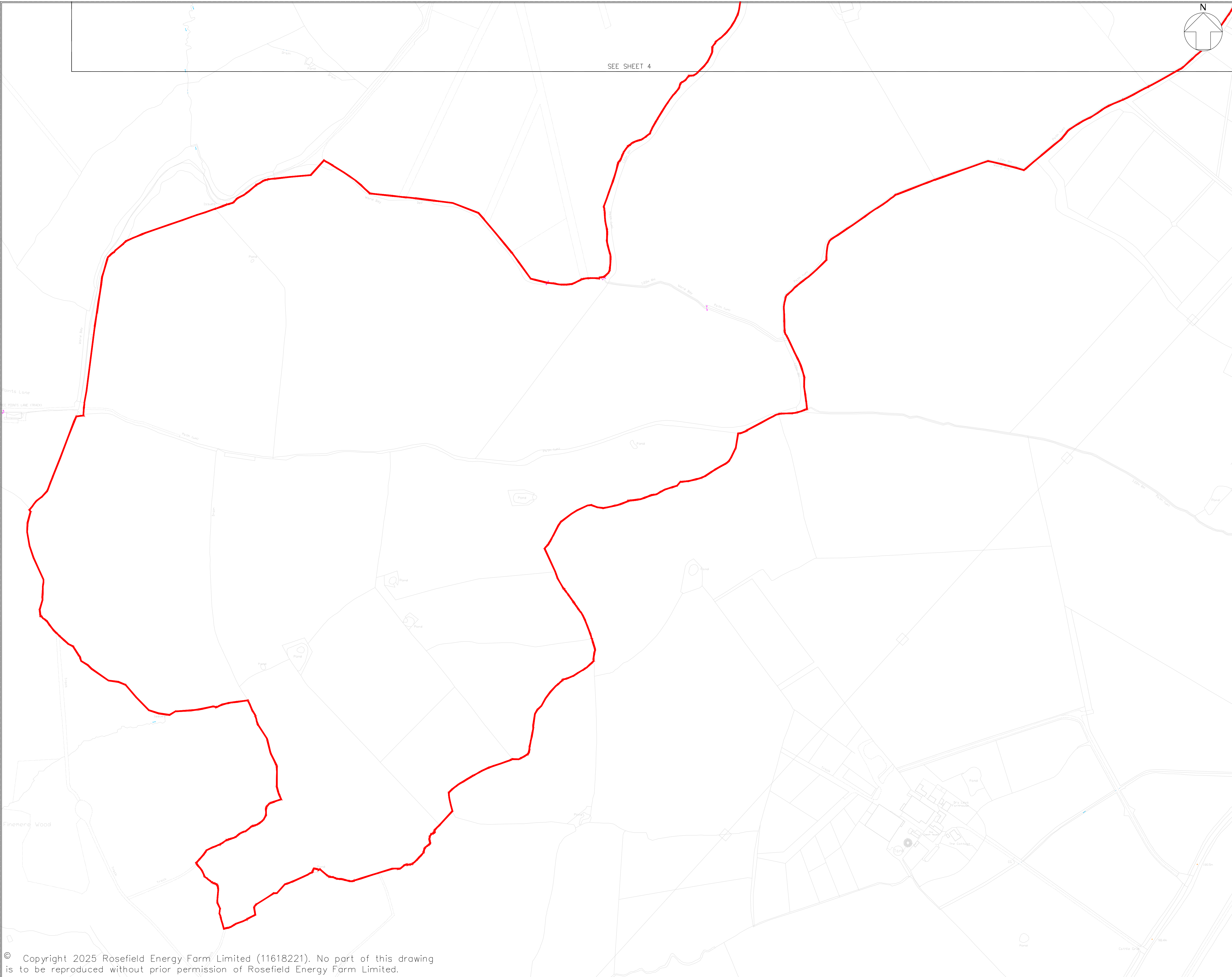
DRAWN:

PF

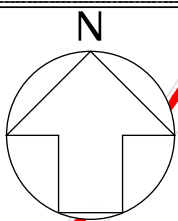
SCALE:

1:2,500 at A1

SCALE BAR:



SEE SHEET 4



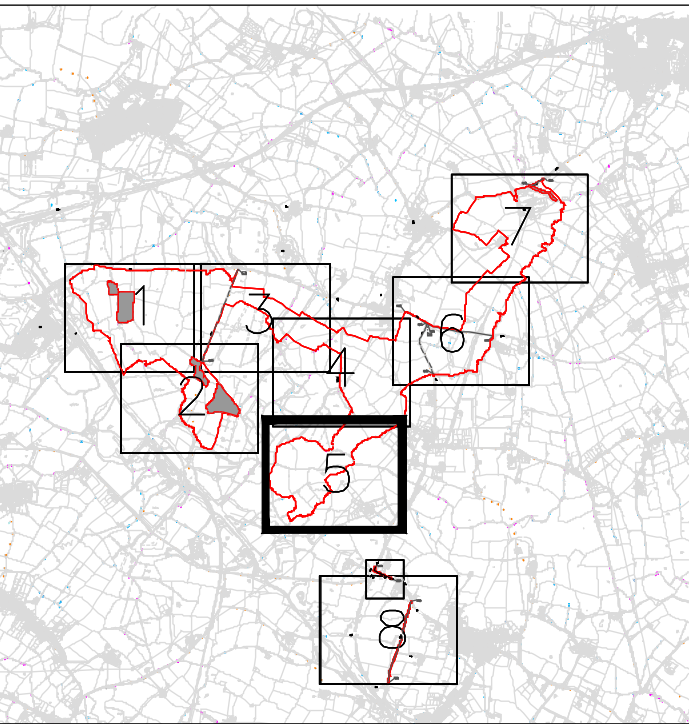
LEGEND:

- STREETWORKS AND TEMPORARY SPEED LIMIT CHANGE
- ORDER LIMITS
- AREA OUTSIDE ORDER LIMITS
- STREETWORKS LOCATION REFERENCE

NOTES:

- ALL DIMENSIONS ARE IN METRES UNLESS STATED OTHERWISE.
- THE STREETS, RIGHTS OF WAY AND ACCESS PLANS SHOULD BE READ IN CONJUNCTION WITH THE DEVELOPMENT CONSENT ORDER (DCO) AND THE DOCUMENTS TO BE CERTIFIED UNDER IT, IN PARTICULAR PARTS 3AND 4 OF THE DCO AND SCHEDULES 4-8.
- FOR INFORMATION RELATING TO THE PROPOSED TEMPORARY TRAFFIC MANAGEMENT AND TRAFFIC REGULATION ORDERS, PLEASE SEE TRAFFIC REGULATIONS PLAN.
- THE ORDER LIMITS HAVE BEEN DRAWN TO THE LAND REGISTRY BOUNDARIES AND TOPOGRAPHICAL SURVEY DATA OF THE SITE. THE ACCURACY OF LAND REGISTRY AND THE TOPOGRAPHICAL SURVEY DIFFERS FROM THE OS BASE MAPPING, WHICH RESULTS IN THE ORDER LIMITS NOT ALIGNING WITH THE LINE WORK SHOWN ON THE OS MAPPING.

KEY PLAN:



02	OCT 2025	UPDATES FOLLOWING S51 ADVICE	PF	PF	EDF
01	SEP 2025	ISSUE	PF	PF	EDF
REVISION	IN L	DESCRIPTION	BY	CHECKED	APPROVED

Rosefield Solar Farm



DOCUMENT:
APPLICATION DRAWINGS
FOR APPROVAL

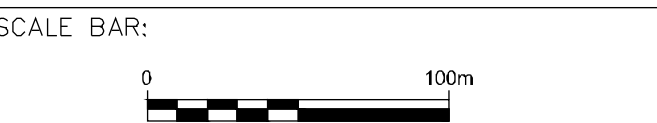
REGULATION 5(2)(o)

DRAWING TITLE:
TRAFFIC REGULATIONS PLAN

SHEET 5 OF 8

PIN REFERENCE NUMBER: EN010158/APP/2.5.2	REVISION: 02
---	-----------------

DATE: OCTOBER 2025	DRAWN: PF	SCALE: 1:2,500 at A1
-----------------------	--------------	-------------------------





LEGEND:

STREETWORKS AND TEMPORARY SPEED LIMIT CHANGE

ORDER LIMITS

AREA OUTSIDE ORDER LIMITS

STREETWORKS LOCATION REFERENCE

NOTES:

1. ALL DIMENSIONS ARE IN METRES UNLESS STATED OTHERWISE.

2. THE STREETS, RIGHTS OF WAY AND ACCESS PLANS SHOULD BE READ IN CONJUNCTION WITH THE DEVELOPMENT CONSENT ORDER (DCO) AND THE DOCUMENTS TO BE CERTIFIED UNDER IT, IN PARTICULAR PARTS 3 AND 4 OF THE DCO AND SCHEDULES 4-8.

3. FOR INFORMATION RELATING TO THE PROPOSED TEMPORARY TRAFFIC MANAGEMENT AND TRAFFIC REGULATION ORDERS, PLEASE SEE TRAFFIC REGULATIONS PLAN.

4. THE ORDER LIMITS HAVE BEEN DRAWN TO THE LAND REGISTRY BOUNDARIES AND TOPOGRAPHICAL SURVEY DATA OF THE SITE. THE ACCURACY OF LAND REGISTRY AND THE TOPOGRAPHICAL SURVEY DIFFERS FROM THE OS BASE MAPPING, WHICH RESULTS IN THE ORDER LIMITS NOT ALIGNING WITH THE LINE WORK SHOWN ON THE OS MAPPING.

KEY PLAN:

D2	OCT 2025	UPDATES FOLLOWING S51 ADVICE	PF	PF	EDF
01	SEP 2025	ISSUE	PF	PF	EDF
REVISION	ON L	DESCRIPTION	BY	CHECKED	APPROVED

Rosefield Solar Farm

DOCUMENT:

APPLICATION DRAWINGS FOR APPROVAL

REGULATION 5(2)(o)

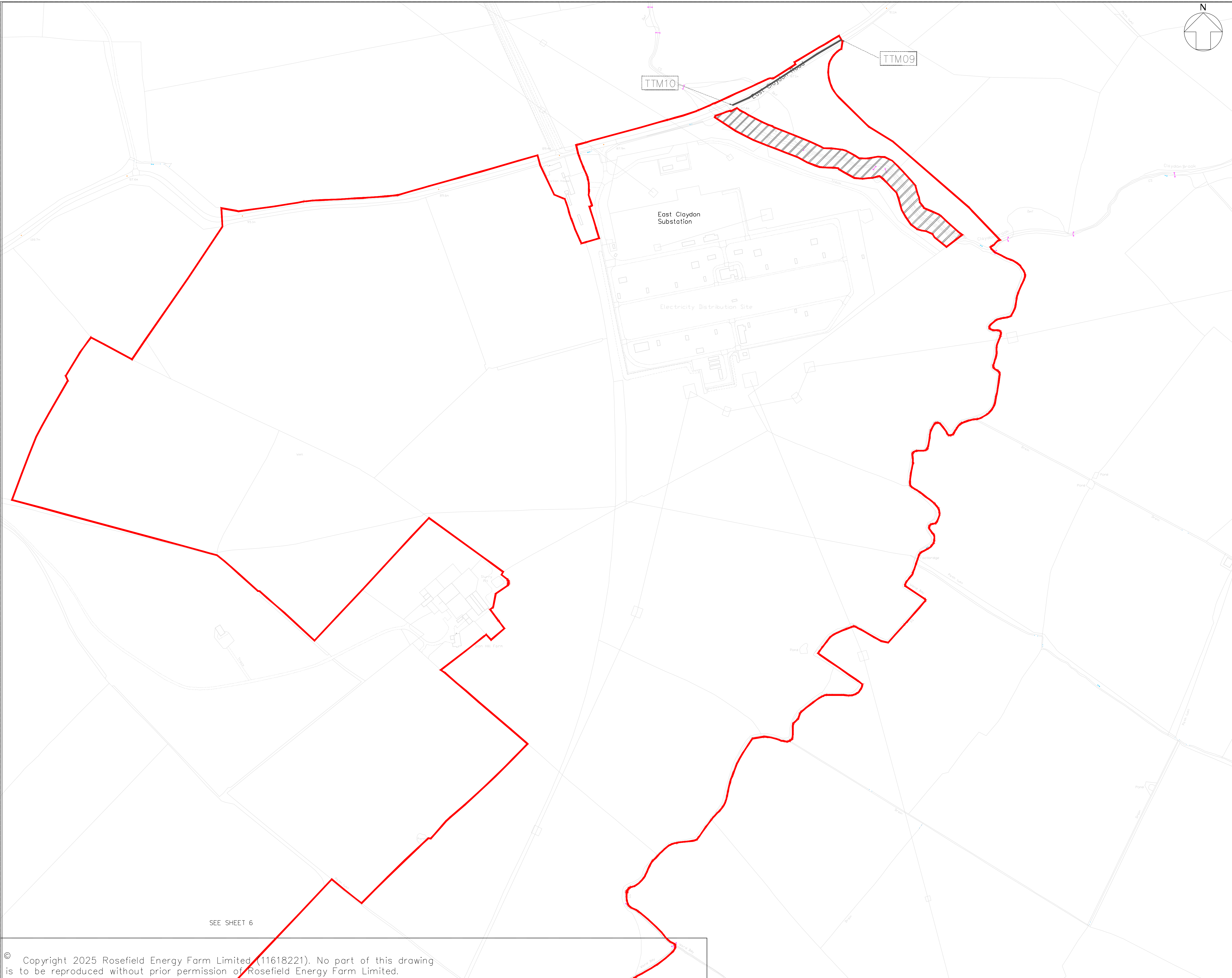
DRAWING TITLE:

TRAFFIC REGULATIONS PLAN

SHEET 6 OF 8

PIN REFERENCE NUMBER:		REVISION:
EN010158/APP/2.5.2		02
DATE:	DRAWN:	SCALE:
OCTOBER 2025	PF	1:2,500 at A1

SCALE BAR:



LEGEND:

- STREETWORKS AND TEMPORARY SPEED LIMIT CHANGE
- ORDER LIMITS
- AREA OUTSIDE ORDER LIMITS
- STREETWORKS LOCATION REFERENCE

NOTES:

- ALL DIMENSIONS ARE IN METRES UNLESS STATED OTHERWISE.
- THE STREETS, RIGHTS OF WAY AND ACCESS PLANS SHOULD BE READ IN CONJUNCTION WITH THE DEVELOPMENT CONSENT ORDER (DCO) AND THE DOCUMENTS TO BE CERTIFIED UNDER IT, IN PARTICULAR PARTS 3 AND 4 OF THE DCO AND SCHEDULES 4-8.
- FOR INFORMATION RELATING TO THE PROPOSED TEMPORARY TRAFFIC MANAGEMENT AND TRAFFIC REGULATION ORDERS, PLEASE SEE TRAFFIC REGULATIONS PLAN.
- THE ORDER LIMITS HAVE BEEN DRAWN TO THE LAND REGISTRY BOUNDARIES AND TOPOGRAPHICAL SURVEY DATA OF THE SITE. THE ACCURACY OF LAND REGISTRY AND THE TOPOGRAPHICAL SURVEY DIFFERS FROM THE OS BASE MAPPING, WHICH RESULTS IN THE ORDER LIMITS NOT ALIGNING WITH THE LINE WORK SHOWN ON THE OS MAPPING.

KEY PLAN:

02	OCT 2025	UPDATES FOLLOWING S51 ADVICE	PF	PF	EDF
01	SEP 2025	FIRST ISSUE	PF	PF	EDF
REVISION	BY	DESCRIPTION	BY	CREATED	APPROVAL

Rosefield Solar Farm

DOCUMENT:
APPLICATION DRAWINGS
FOR APPROVAL

REGULATION 5(2)(o)

DRAWING TITLE:
TRAFFIC REGULATIONS PLAN

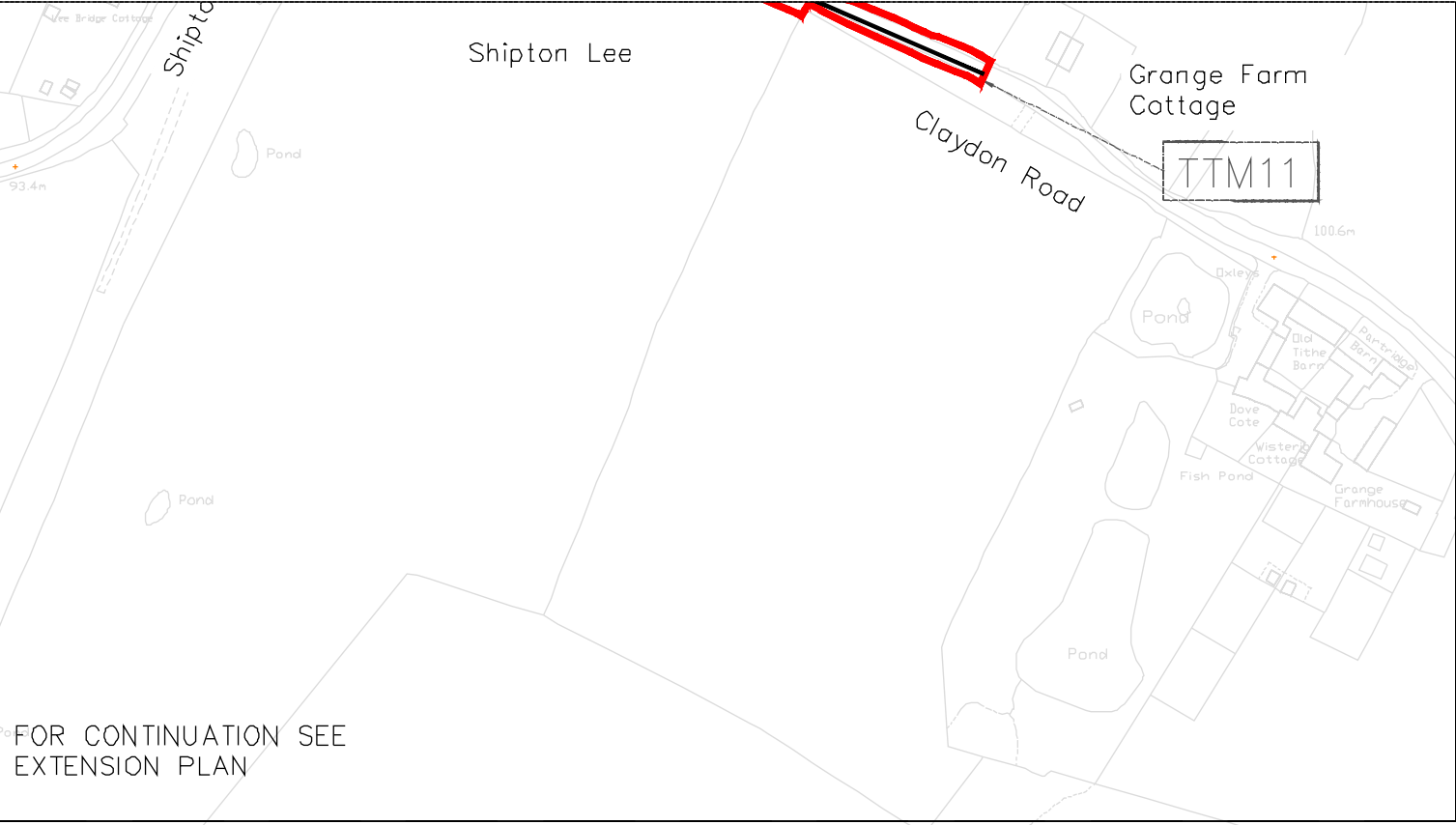
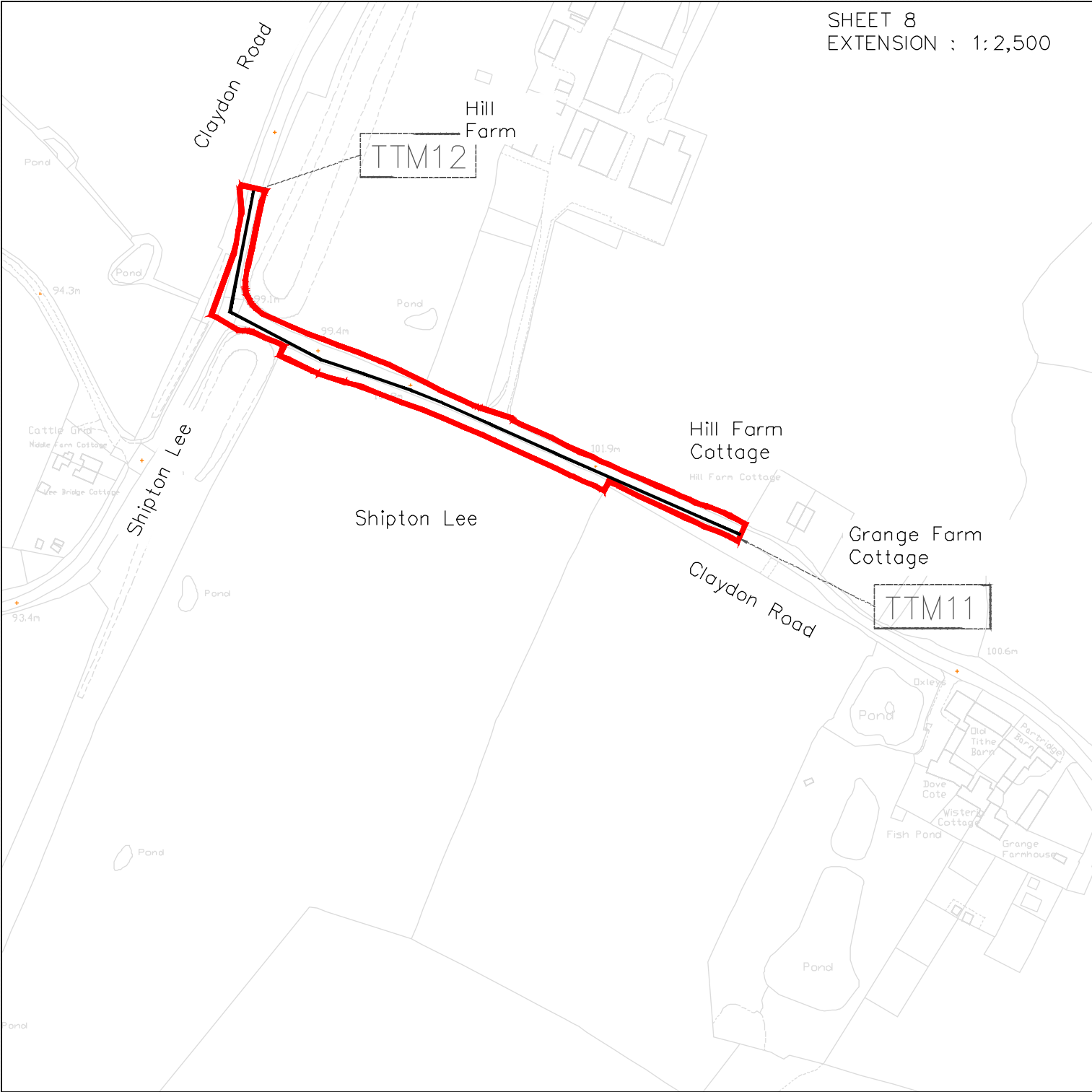
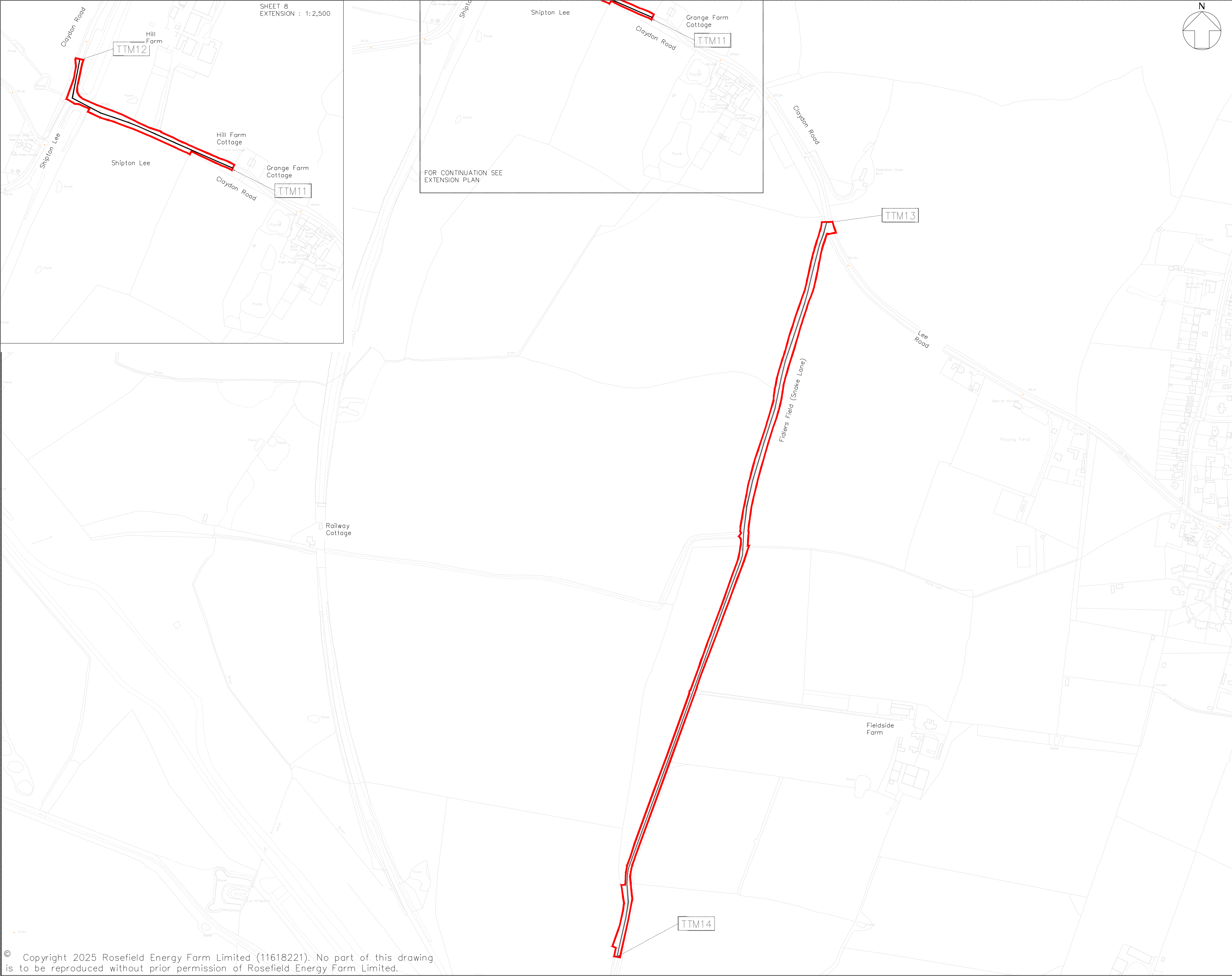
SHEET 7 OF 8

PIN REFERENCE NUMBER: EN010158/APP/2.5.2	REVISION: 02	
DATE: OCTOBER 2025	DRAWN: PF	SCALE: 1:2,500 at A1

SCALE BAR:

© Copyright 2025 Rosefield Energy Farm Limited (11618221). No part of this drawing is to be reproduced without prior permission of Rosefield Energy Farm Limited.

This drawing may contain: Ordnance Survey material by permission of Ordnance Survey on behalf of the Controller of His Majesty's Stationery Office © Crown Copyright 2025. All rights reserved. Reference number 0100031673
OS Open data / © Natural England / © DEFRA / © DECC / © English Heritage. Aerial Photography • ESRI, DigitalGlobe, GeoEye, i-cubed, USDA FSA, USGS, AEX, Getmapping, Aerogrid, IGN, IGP, swisstopo, the GIS User Community



LEGEND:

STREETWORKS AND TEMPORARY SPEED LIMIT

CHANGE

ORDER LIMITS

AREA OUTSIDE ORDER LIMITS

STREETWORKS LOCATION REFERENCE

NOTES:

1. ALL DIMENSIONS ARE IN METRES UNLESS STATED OTHERWISE.

2. THE STREETS, RIGHTS OF WAY AND ACCESS PLANS SHOULD BE READ IN CONJUNCTION WITH THE DEVELOPMENT CONSENT ORDER (DCO) AND THE DOCUMENTS TO BE CERTIFIED UNDER IT, IN PARTICULAR PARTS 3 AND 4 OF THE DCO AND SCHEDULES 4-8.

3. FOR INFORMATION RELATING TO THE PROPOSED TEMPORARY TRAFFIC MANAGEMENT AND TRAFFIC REGULATION ORDERS, PLEASE SEE TRAFFIC REGULATIONS PLAN.

4. THE ORDER LIMITS HAVE BEEN DRAWN TO THE LAND REGISTRY BOUNDARIES AND TOPOGRAPHICAL SURVEY DATA OF THE SITE. THE ACCURACY OF LAND REGISTRY AND THE TOPOGRAPHICAL SURVEY DIFFERS FROM THE OS BASE MAPPING, WHICH RESULTS IN THE ORDER LIMITS NOT ALIGNING WITH THE LINE WORK SHOWN ON THE OS MAPPING.

KEY PLAN:

D2	OCT 2025	UPDATES FOLLOWING S51 ADVICE	PF	PF	EDF
01	SEP 2025	ISSUE	PF	PF	EDF
REVISION	ON L	DESCRIPTION	BY	CHECKED	APPROVED

Rosefield Solar Farm

DOCUMENT:

APPLICATION DRAWINGS FOR APPROVAL

REGULATION 5(2)(o)

DRAWING TITLE:

TRAFFIC REGULATIONS PLAN

SHEET 8 OF 8

PIN REFERENCE NUMBER:

EN010158/APP/2.5.2

REVISION:

02

DATE:

OCTOBER 2025

DRAWN:

PF

SCALE:

1:2,500 at A1

SCALE BAR:

© Copyright 2025 Rosefield Energy Farm Limited (11618221). No part of this drawing is to be reproduced without prior permission of Rosefield Energy Farm Limited.

This drawing may contain: Ordnance Survey material by permission of Ordnance Survey on behalf of the Controller of His Majesty's Stationery Office © Crown Copyright 2025. All rights reserved. Reference number 0100031673

OS Open data / © Natural England / © DEFRA / © DECC / © English Heritage. Aerial Photography • ESRI, DigitalGlobe, GeoEye, i-cubed, USDA FSA, USGS, AEX, Getmapping, Aerogrid, IGN, IGP, swisstopo, the GIS User Community

